



An alternative way to identify local geomagnetically quiet days: a case study using wavelet analysis

Virginia Klausner^{1,2,3}, Andrés Reinaldo Rodríguez Papa^{3,4}, Cláudia Maria Nicole Cândido²,
Margarete Oliveira Domingues², and Odim Mendes²

¹Vale do Paraíba University – UNIVAP 12244-000, São José dos Campos, SP, Brazil

²National Institute for Space Research – INPE 12227-010, São José dos Campos, SP, Brazil

³National Observatory – ON 20921-400, Rio de Janeiro, RJ, Brazil

⁴Rio de Janeiro State University – UERJ 20550-900, Rio de Janeiro, RJ, Brazil

Correspondence to: Virginia Klausner (viklausner@gmail.com)

Received: 16 December 2015 – Revised: 1 March 2016 – Accepted: 4 April 2016 – Published: 19 April 2016

Abstract. This paper proposes a new method to evaluate geomagnetic activity based on wavelet analysis during the solar minimum activity (2007). In order to accomplish this task, a newly developed algorithm called effectiveness wavelet coefficient (EWC) was applied. Furthermore, a comparison between the 5 geomagnetically quiet days determined by the Kp-based method and by wavelet-based method was performed. This paper provides a new insight since the geomagnetic activity indexes are mostly designed to quantify the extent of disturbance rather than the quietness. The results suggest that the EWC can be used as an alternative tool to accurately detect quiet days, and consequently, it can also be used as an alternative to determine the Sq baseline to the current Kp-based 5 quietest days method. Another important aspect of this paper is that most of the quietest local wavelet candidate days occurred in an interval 2 days prior to the high-speed-stream-driven storm events. In other words, the EWC algorithm may potentially be used to detect the quietest magnetic activity that tends to occur just before the arrival of high-speed-stream-driven storms.

Keywords. Geomagnetism and paleomagnetism (instruments and techniques; general or miscellaneous) – Magnetospheric physics (solar wind–magnetosphere interactions)

1 Introduction

A substantial part of the energy carried by the solar wind (SW) can be transferred to the terrestrial magnetosphere, and it is associated with the passage of southward-directed inter-

planetary magnetic fields past the Earth for sufficiently long intervals of time. Gonzalez et al. (1994) discussed the energy transfer process as a conversion of the mechanical energy from the SW into magnetic energy stored in the magnetotail of Earth's magnetosphere and its reconversion into thermal mechanical energy in the plasma sheet, auroral particles, ring current and Joule heating of the ionosphere.

The increase in the SW pressure is responsible for the energy injections, and it induces global effects in the magnetosphere called geomagnetic storms. The characteristic signature of geomagnetic storms can be described as a depression on the horizontal component of the Earth's magnetic field measured at low- and middle-latitude ground observatories. The decrease in the magnetic horizontal field component is due to an enhancement of the trapped magnetospheric particle population as a consequence of the enhanced ring of current. This perturbation of the H component can last from several hours to several days as described by Chapman and Bartels (1940) and Sugiura (1964).

During solar minimum activity, as in the case studied in this work, corotating high-speed streams (HSSs) contribute 70 % of the geomagnetic activity (Tsurutani et al., 1995; Richardson et al., 2000; Gonzalez et al., 2006; Guarnieri, 2006; Kozyra et al., 2006; Turner et al., 2006). The interaction between a fast-speed and a lower-speed stream generates a compression of plasma and magnetic fields which, by this interaction, creates the so-called corotating interaction regions (CIRs; Smith and Wolfe, 1976). The geomagnetic activity due to CIRs and solar HSSs has a physical mechanism much different than the magnetic storms caused by fast inter-

planetary coronal mass ejections (ICMEs). In the CIRs and solar HSSs cases, the principal cause of geomagnetic storms is the intermittency and the brief intervals of southward magnetic field resulting from magnetic field fluctuations associated with Alfvén waves (Tsurutani et al., 1995; Belcher and Davis, 1971; Tsurutani and Gonzalez, 1987; Richardson, 2006). Due to the highly oscillatory nature of the magnetic field within the CIRs, the resultant geomagnetic storms are typically only weak to moderate in intensity and the storm main phases are irregular and do not decrease smoothly with time (Tsurutani et al., 2006).

Recently, the discrete wavelet transform (DWT) has been used to classify quiescent and non-quiescent periods related to geomagnetic storms. As an alternative to the traditional Dst index (Sugiura, 1964), new indexes were developed using DWT, such as the wavelet-based index of storm activity (WISA; Jach et al., 2006; Xu et al., 2008) and W_p (Nosé et al., 2012), among others. Motivated by the works of Mendes et al. (2005), Mendes da Costa et al. (2011), Hafez et al. (2013) and Klausner et al. (2014a, b, 2016a, b), which use the DWT to detect transition regions and to localize singularities in geophysical data, in this work, the geomagnetic variation associated with the events of CIRs and HSSs in 2007 will be analyzed. To accomplish this task, the DWT will be used in three levels of decomposition to calculate the effectiveness wavelet coefficients (EWCs). With the EWCs in hand, we will be able to detect the local quiet and the local disturbed wavelet candidate days for each magnetic observatory chosen. The aim of this paper is to compare the 5 local quiet wavelet candidate days to the 5 quietest days determined by the German Research Center for Geosciences (GFZ) and to discuss how this selection may be used to detect the quietest magnetic activity that tends to occur before HSS events.

2 Data set

In this paper, 13 worldwide ground magnetic observatories distributed reasonably homogeneously have been selected. One of the 13 observatories chosen is Vassouras (VSS), which is located under the South Atlantic magnetic anomaly (minimum of the geomagnetic field intensity), and another four of them, Hermanus (HER), Kakioka (KAK), Honolulu (HON) and San Juan (SJG), are used to calculate the Dst index. The geomagnetic data used in this work rely on data collections provided by the International Real-time Magnetic Observatory Network (INTERMAGNET) program (<http://www.intermagnet.org>).

The geographic distribution of the magnetic observatories and their International Association of Geomagnetism and Aeronomy (IAGA) codes are shown in Fig. 1. Their respective IAGA codes and locations are also given in Table 1. This selection of magnetic observatories is the same selection used in a previous work by Klausner et al. (2013) for the same reasons (exclusion of the major influence of the auroral

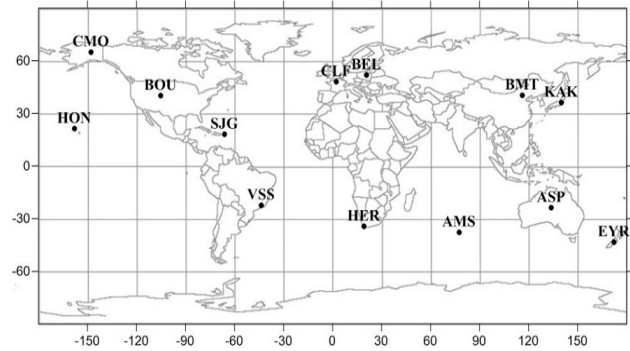


Figure 1. Geographical location of the observatories used in this work and their respective IAGA code.

Table 1. INTERMAGNET network of geomagnetic observatories used in this study.

Station	Geographic coord.		Geomagnetic coord.	
	Lat. (°)	Long. (°)	Lat. (°)	Long. (°)
AMS	−37.83	77.56	−46.07	144.94
ASP	−23.76	133.88	−32.50	−151.45
BEL	51.83	20.80	50.05	105.18
BMT	40.30	116.20	30.22	−172.55
BOU	40.13	−105.23	48.05	−38.67
CLF	48.02	2.26	49.56	85.72
CMO	64.87	−147.86	65.36	−97.23
EYR	−43.42	172.35	−46.79	−106.06
HER	−34.41	19.23	−33.89	84.68
HON	21.32	−158.00	21.59	−89.70
KAK	36.23	140.18	27.46	−150.78
SJG	18.12	−66.15	27.93	6.53
VSS	−22.40	−43.65	−13.43	27.06

Source: <http://wdc.kugi.kyoto-u.ac.jp/igrf/gggm/index.html> (2010).

and equatorial electrojets). However, in this work, we only use the data interval corresponding to the year 2007 (solar minimum activity).

The interplanetary SW and magnetic field considered to identify the HSSs and CIRs are taken from measurements by the Atmospheric Composition Explorer (ACE) satellite and are available through the National Space Science Data Center (OMNIWeb): <http://omniweb.gsfc.nasa.gov/form/dx1.html>. The Kp and Dst indexes are extracted from the world Data Center for Geomagnetism, Kyoto (<http://wdc.kugi.kyoto-u.ac.jp>).

3 Methodology

The method used here is based on the DWT to characterize the local magnetic variation behaviors. This technique is employed to analyze the quiet local day candidates at each magnetic observatory chosen. The EWC approach is ap-

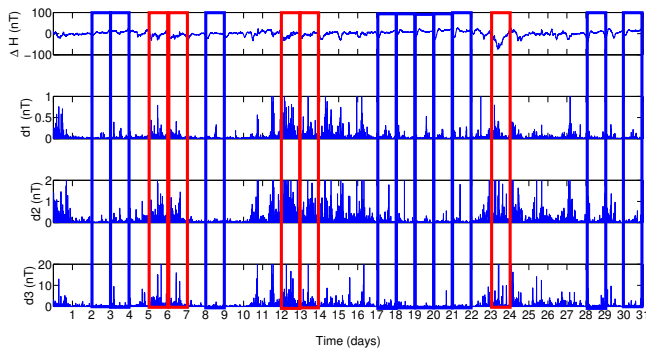


Figure 2. The H component average variation for KAK obtained in March 2007 is presented in the upper panel, and the square root wavelet coefficients amplitudes d_1 , d_2 and d_3 , corresponding to the pseudo-periods of 3, 6 and 12 min, in the bottom three panels. The 10 geomagnetically quietest days (blue) and the 5 most disturbed days (red) are highlighted. These highlighted days are the days determined by the GFZ, which are deduced from the Kp index on the basis of their criteria.

plied in order to facilitate the DWT analysis visualization because it has only one level of decomposition, which translates the three levels that are previously calculated by the DWT method.

Why is the DWT used in this work? The reason for using the discrete wavelet methodology instead of a Fourier transform, as explained by Xu et al. (2008), is due to the geomagnetic data containing several different kinds of variations with various spectral ranges which are related to complex current systems in the ionosphere and magnetosphere. On the one hand, the Fourier transform has been a traditional tool to analyze geophysical data. Sugiura (1964) chose a Fourier transform to identify quiet signals of expected harmonics related to Earth rotation, lunar orbit and Earth orbit. Love and Rigler (2014) also performed a detailed Fourier harmonic analysis of magnetic tides using the Honolulu observatory data. On the other hand, the DWT can decompose the signal into different frequency variations and obtain information localized in both frequency and space domains, while in the Fourier transform, the information is only localized in the frequency domain due to the Heisenberg principle. For these reasons, using DWT, it is possible to separate the different kinds of magnetic variations from their drivers.

3.1 Identification of local magnetic disturbance

The discrete wavelet analysis has the following property: the larger amplitudes of the wavelet coefficients are associated with locally abrupt signal changes or details of higher frequency. In the work of Mendes et al. (2005) and the subsequent works of Mendes da Costa et al. (2011), Hafez et al. (2013) and Klausner et al. (2014a, 2016a), a method for the detection of the transition regions and the location of sin-

gularities due to geomagnetic events was implemented and evaluated.

In these works, the highest amplitudes of the wavelet coefficients indicate the singularities in the geomagnetic signal in association with the disturbed periods.

In this work, we applied this methodology to the magnetic ground signal using Daubechies orthogonal wavelet function family 2 (db2). Using db2, the pseudo-periods corresponding to the first three wavelet decomposition levels are 3, 6 and 12 min; see Klausner et al. (2014a) for more details. These pseudo-period values are associated with our choice of wavelet function and with the data sample rate used, in this case, a 1 min time resolution.

As observed by Mendes et al. (2005) Klausner et al. (2014a, 2016a) for different observatories and magnetic storms, the periods of 3, 6 and 12 min were able to identify the sudden storm commencement (SSC) and the storm main phase (SMP) in all magnetic observatory wavelet signatures. These magnetic field fluctuations on the ground are associated with variations in the ring current, and it is possible to infer that the wavelet signatures in the first three levels are related to the ring current in this timescale range, which consequently is related to Pci 5 pulsations.

The wavelet coefficients d_k^j are described as the inner product of

$$d_k^j = \int f(t) \psi_k^j(t) dt, \quad (1)$$

where $f(t)$ is the signal with k number of points, ψ is the analyzing wavelet db2, and j is the decomposition level.

As discussed by Klausner et al. (2014a), the wavelet coefficient can be considered a local approximation error. Moreover, wavelet coefficients can be used as local indicators of the signal regularity. The local approximation error depends on the analyzing wavelet function choice, and as a result, the local error obtained by this approximation can be indicated by the wavelet coefficients. These local errors also detect the local regularity of high-order derivatives of the signal. Normally, this kind of feature cannot be seen by visual inspection (see Appendix A of Klausner et al., 2014a, for more details).

In this work, we use the db2 wavelet, which approximates locally linear functions. Previous works (Mendes et al., 2005; Klausner et al., 2014a, 2016a) focused on finding the highest amplitudes of the wavelet coefficients, which indicate the local disturbances related to the abrupt signal variations. These highest amplitudes were evaluated as indicators of disturbed periods in the geomagnetic data set. However, if the signal can be approximated locally by linear functions, then the wavelet coefficients are zero in those regions. The smaller the amplitude of the wavelet coefficients, the smoother the signal. Therefore, when the magnetosphere is under quiet conditions, the wavelet coefficients should show very small amplitudes. Here our focus is to identify these local quiet periods in the analyzed signal. In addition, we will evaluate whether the local quiet periods identified by the wavelet coefficients

Table 2. The first 10 geomagnetically quietest days and the first 5 most disturbed days determined by the GFZ for March 2007.

Month/year	10 quietest days										5 most disturbed days				
	q1	q2	q3	q4	q5	q6	q7	q8	q9	q10	d1	d2	d3	d4	d5
Mar	20	21	3	19	9	29	22	18	31	4	13	24	6	7	14

Source: <http://wdc.kugi.kyoto-u.ac.jp/qddays/index.html>.

necessarily correspond to a non-disturbed day determined by the GFZ.

We present an example of the local magnetic disturbance identification by the DWT using three decomposition levels in Fig. 2. This figure is composed of four panels. The first panel presents geomagnetic horizontal components obtained with a resolution of 1 min at Kakioka observatory (Japan) on March 2007 and the other three present the first (d1), the second (d2) and the third (d3) wavelet decomposition level. Also, the first 10 geomagnetically quietest days are highlighted in blue and the 5 most disturbed days in red. These days are determined by the GFZ; see Table 2. The GFZ selection of the quietest days and the most disturbed days for each month is deduced from the Kp index, and it is based on three criteria for each day, such as the sum of the eight Kp values, the sum of squares of the eight Kp values and the maximum of the eight Kp values (see <http://www.gfz-potsdam.de> for more details). By analyzing these highlighted days in Fig. 2, we will try to validate the wavelet method as an alternative way to classify the level of geomagnetic disturbance.

In Fig. 2, the wavelet coefficients that appear simultaneously at all three decomposition levels with amplitudes higher than the background are associated with geomagnetic storms as discussed in Mendes et al. (2005), Mendes da Costa et al. (2011), Klausner et al. (2014a) and Klausner et al. (2016a). However, we will focus on the days that present smaller wavelet coefficient amplitudes (WCAs) or that are equal to the background; i.e., these days will be the wavelet candidates for quiet days. Consequently, the days with higher amplitudes will be considered as geomagnetically disturbed. Through the analysis of WCAs, it will be possible to distinguish the 5 quietest days from any other disturbed days in every month of 2007.

3.2 Example of the identification of magnetic disturbance and EWC

In this section, we will apply the EWC in all geomagnetic data sets in order to enhance the visualization of the wavelet coefficients. This method has been already defined in the work of Klausner et al. (2014a, 2016a, b), and it is described by the following expression:

EWC =

$$\frac{1}{7} \left(4 \sum_k^N |d_k^{j=1}|^2 + 2 \sum_k^N |d_k^{j=2}|^2 + \sum_k^N |d_k^{j=3}|^2 \right), \quad (2)$$

where the k summations are for 1 day, $N = 1440$, considering our original signals with a 1 min resolution for every month.

The EWC is weighted according to the scale decomposition levels to identify the small-scale disturbances better.

One advantage of the EWC over other methods is that the EWC can be performed in times series with gaps without a need for data interpolation. In other words, a few issues such as the availability and the data quality during short periods of time and erroneous data points can be treated as gaps without compromising the analysis.

Figure 3 shows the EWC for each magnetic observatory chosen in alphabetical order as given in Table 1. Similar to Fig. 2, all these graphs have the first 10 geomagnetically quietest days and the 5 most disturbed days determined by the GFZ highlighted in blue and in red, respectively, for March 2007. The EWC also allows us to evaluate the locally quietest candidate days and the most locally disturbed candidate days for each magnetic observatory chosen. The results of the 10 quietest and the 5 most disturbed candidate days for each observatory are presented in Table 3. In this table, the superscript letter a indicates the days where the EWC candidate and the GFZ day are coincident and in the same order of magnetic disturbance, and superscript b indicates the days where the EWC candidate and the GFZ day are coincident but have a different order of magnetic disturbance. Comparing the results of candidate days with the days determined by the GFZ, we note that most of the quietest and disturbed candidate days are classified as international quiet days (IQD) and international disturbed days (IDD), respectively, by the GFZ. The IQD and IDD vary from the highest to the lowest order of quietness and disturbance, respectively. Here, some of the candidate days correspond to the 10 IQD and/or 5 IDD but with a different order of quietness and/or disturbance.

4 Results and discussion

The question arises as to why the quietest local wavelet and locally disturbed candidate days are not the same ones classified as quiet and as disturbed by the GFZ. In order to address this question, we decided to compare the results of

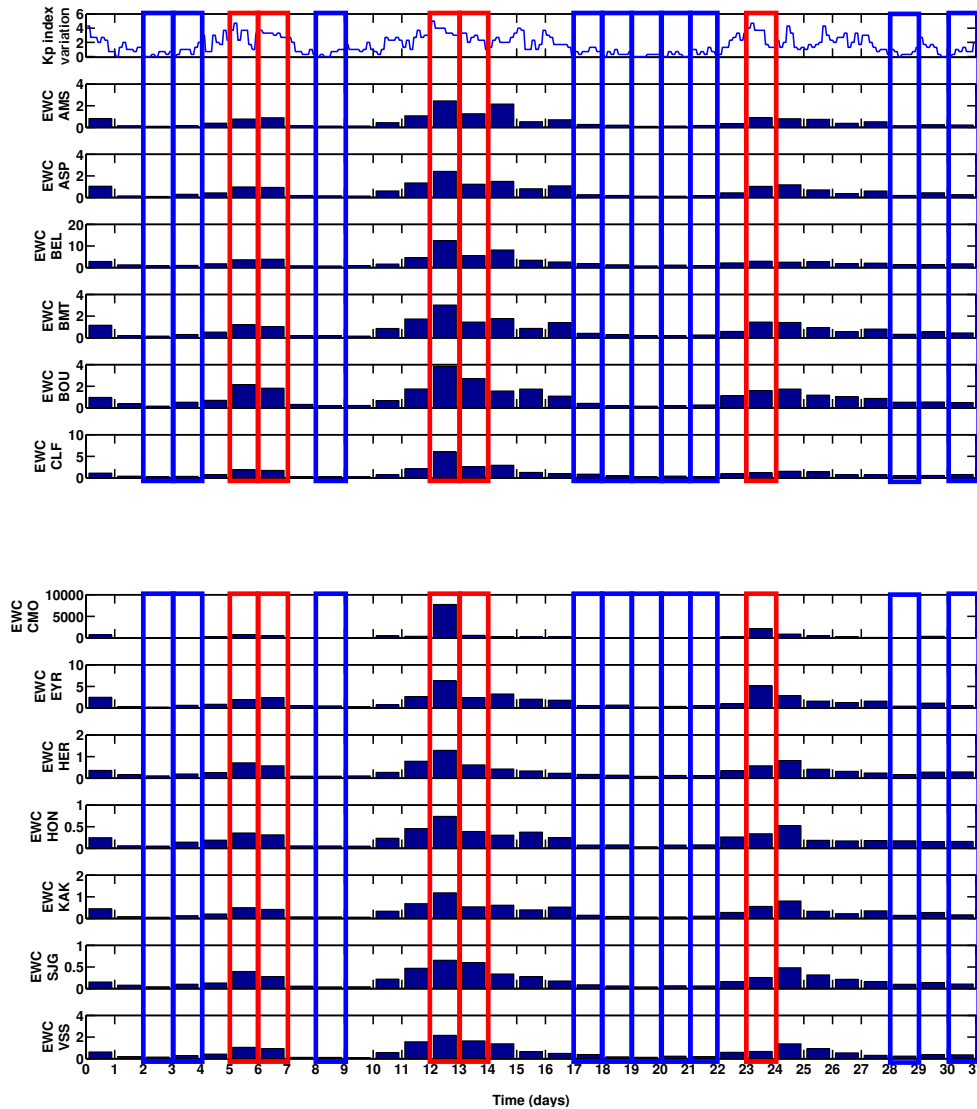


Figure 3. The effectiveness wavelet coefficients for each magnetic observatory chosen related to March 2007.

Fig. 3 and Table 3 to solar events observed in the same period. The events identified as HSSs, which mostly originated from coronal holes, are indicated in Table 4. Solar and interplanetary parameters associated with these HSSs events are shown in Fig. 4. In this figure, F10.7 is the solar flux ($10^{-22} \text{ Wm}^{-2} \text{ Hz}^{-1}$); SWvel is the SW velocity (km s^{-1}); SWNP is the SW density (cm^3); SW temp. is the SW temperature ($10^5 \times \text{K}$); IMF B_z is the interplanetary magnetic field (nT); B_{aver} is the total magnetic field strength (nT) in GSM coordinates; AE is the auroral electrojet index (nT); and Dst is the disturbance storm time index (nT). Vertical lines indicate the beginning of each slow solar wind (SSW) event.

Table 4 is a slightly modified table from Xistouris et al. (2014) and it is arranged as follows: column 1 gives the studied events labeled a to e; column 2 gives the date and the time of occurrence of an intensification of SW velocity; column 3

gives the date, the time and the value of the SW maximum velocity; column 4 gives the average SW velocity; and column 5 gives the duration in days of the HSS.

In Fig. 3, it is noticeable that most of the quietest local wavelet candidate days occurred in an interval 2 days prior to the high-speed-stream-driven storm (see Fig. 4 for comparison). This fact was already observed by the Kp index and explained by Borovsky and Steinberg (2006). They explained these calm periods (2 days) as being due to the uncompressed SSW reaching the Earth just before the Earth is compressed by high-speed-wind arrival. Also, the difference in responses of the geomagnetic observatories can be explained by cool dense plasma that appears on the nightside of the Earth during the early phase and by the increase in geomagnetic storm perturbations; see Borovsky and Steinberg (2006) for more details. In this work, the wavelet coefficients also seem to be

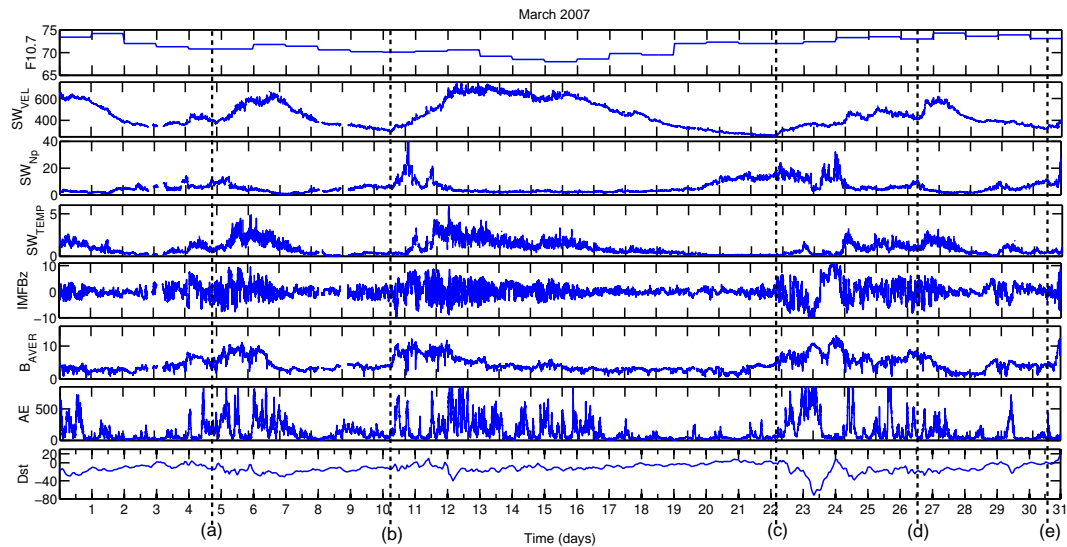


Figure 4. Interplanetary parameters of March 2007. The dashed lines correspond to the starting time of the events presented in Table 4.

Table 3. The 10 geomagnetically quietest days and 5 most disturbed days obtained by the discrete wavelet analysis for March 2007.

Station	10 quietest days										5 most disturbed days				
	q1	q2	q3	q4	q5	q6	q7	q8	q9	q10	d1	d2	d3	d4	d5
AMS	20 ^a	3 ^b	9 ^b	21 ^b	10	29 ^a	2	8	4 ^b	22 ^b	13 ^a	15	14 ^b	12	24 ^b
ASP	3 ^b	20 ^b	21 ^b	10	2	9 ^b	22 ^a	8	29 ^b	19 ^b	13 ^a	15	12	14 ^b	25
BEL	9 ^b	20 ^b	8	3 ^b	22 ^b	10	4 ^b	21 ^b	2	19 ^b	13 ^a	15	14 ^b	12	7 ^b
BMT	3 ^b	10	21 ^b	20 ^b	9 ^a	8	2	22 ^b	19 ^b	4 ^a	13 ^a	15	12	24 ^b	14 ^a
BOU	3 ^b	20 ^b	21 ^b	9 ^b	19 ^b	10	22 ^a	8	2	18 ^b	13 ^a	14 ^b	6 ^a	7 ^a	12
CLF	20 ^a	10	3 ^a	9 ^b	22 ^b	8	4 ^b	2	21 ^b	19 ^b	13 ^a	15	14 ^b	12	6 ^b
CMO	20 ^a	3 ^b	21 ^b	19 ^a	10	4 ^b	9 ^b	29 ^b	18 ^b	22 ^b	13 ^a	24 ^a	25	6 ^b	1
EYR	3 ^b	20 ^b	10	2	21 ^b	29 ^a	9 ^b	31 ^b	22 ^b	8	13 ^a	24 ^a	15	25	12
HER	20 ^a	9 ^b	8	10	3 ^b	22 ^b	21 ^b	19 ^b	2	29 ^b	13 ^a	25	12	6 ^b	14 ^a
HON	20 ^a	10	3 ^a	9 ^b	8	2	21 ^b	18 ^a	19 ^b	22 ^b	13 ^a	25	12	14 ^b	16
KAK	3 ^b	10	20 ^b	9 ^b	21 ^b	8	2	19 ^b	22 ^b	4 ^a	13 ^a	25	12	15	24 ^b
SJG	9 ^b	20 ^b	10	3 ^b	8	19 ^b	22 ^a	21 ^b	2	18 ^b	13 ^a	14 ^b	25	12	6 ^b
VSS	10	9 ^b	8	20 ^b	3 ^b	19 ^b	22 ^a	2	21 ^b	29 ^b	13 ^a	14 ^b	12	15	25

^a indicates the quietest and/or disturbed wavelet candidate days, with the IQD or/and IDD being coincident; ^b indicates a wavelet candidate with a different order of quietness and/or disturbance from 10 IQD and/or 5 IDD.

able to estimate “the calm days before the storm” discussed by Borovsky and Steinberg (2006).

In order to show the association of HSSs and CIRs with the geomagnetic variation, we present a spectral analysis using the gapped wavelet technique (GWT) of the geomagnetic indexes such as AE, Kp and Dst. The GWT can be used in the analysis of nonstationary signal to obtain information on the frequency or scale variations and to detect its structures’ localization in time and/or in space (see Klausner et al. (2013) for more details). It is possible to analyze a signal in a timescale plane, the so-called wavelet scalogram that is used to provide the energy distribution in the timescale plane. In the scalograms presented in Fig. 5, areas of stronger wavelet

power are shown in dark red and the areas of low wavelet power are shown in dark blue. On the x axis the time variation is plotted with a 1-day resolution, and the scale variation is plotted on y axis.

Figure 5 presents the variation of each index (top panel) as a function of each day of March 2007 and its corresponding wavelet spectrum (bottom panel). Small periodicities (less than 1 day) between 6–7, 11–17 and 23–28 March which are associated with the fast fluctuations due to the injection of energy in the magnetosphere are noticeable. Also, it is possible to identify periodicities of 5, 7 and 27 days, and the sub-harmonics of Sun rotation, i.e., 9 and 13.5 days, which are associated with HSSs and CIRs. From the gapped

Table 4. Solar events in 2007 March.

Column 1	2	3	4	5
Event	Starting time day, month, time (UT)	Maximum SW velocity day, month, time (UT), km s ⁻¹	Average SW velocity km s ⁻¹	Duration days
2007				
a	5 Mar 19:00	7 Mar 13:00 628	382	3.42
b	11 Mar 06:00	13 Mar 06:00 698	299	11.29
c	23 Mar 02:00	26 Mar 07:00 498	260	4.38
d	27 Mar 12:00	28 Mar 04:00 581	425	4.04
e	31 Mar 13:00	2 Apr 20:00 645	333	7.67

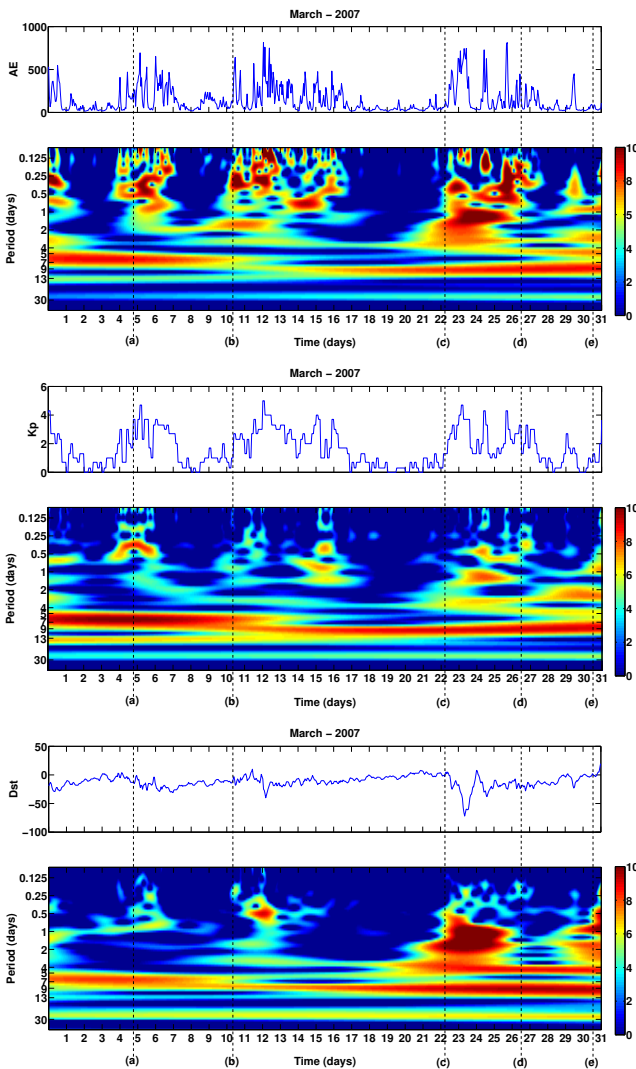


Figure 5. Gapped wavelet spectra (bottom panel) of the geomagnetic indexes (top panel) AE, Kp and Dst for March 2007. The dashed lines correspond to the starting time of the events presented in Table 4.

wavelet spectrum analysis, the spectra of AE and Dst are well-correlated to the Kp spectrum, and consequently, they are well-correlated to the days classified as quiet and as disturbed days by the GFZ. The way that the GFZ classifies these days assumes a linear relation between magnetic observatories during both quiet and disturbed times. This kind of relation to nonlinear systems, such as geomagnetic storms, can be misleading. It should be noted that even during quiet times each observatory has unequal contributions according to its local conductivity of the E-region, the local geomagnetic field intensity and its configuration, and the regional thermospheric winds (Klausner et al., 2013). However, the wavelet coefficients can detect all these nonlinear variations because each observatory magnetic data point is separately analyzed, which may be one advantage of our analysis performed here.

The quietest local wavelet candidate days were identified for the whole year of 2007 following the same strategy as mentioned in the context of analysis applied on March 2007. Figure 6 shows the SW velocity for the year 2007. In the upper panel, the 5 quietest days determined by the GFZ are highlighted in red. In the lower panels, the 5 quietest days for each magnetic observatory used in this work determined by the wavelet-based method are highlighted in green. The SW velocity clearly shows recurrent high-speed streams during this period. Since the Kp index varies with the SW velocity, the GFZ 5 quietest days appear mostly during the passage of low-speed SW. It can be also seen that the quietest magnetic activity tends to occur just before the arrival of high-speed SW as other researchers have previously found (Tsurutani et al., 1995; Borovsky and Steinberg, 2006). The wavelet-based method shows remarkably similar results in the detection of quiet periods preceding SW HSSs to the normal Kp-based method used by the GFZ. Since the difference between these two results is rather small, it is possible to say that the wavelet-based method can be used as an alternative tool to the Kp-based method in detecting quiet SW conditions, in spite of the fact that the wavelet method is more sensitive to high-frequency magnetic variations (pseudo-periods are 3, 6 and 12 min) in comparison with Kp.

However, the geomagnetic activity also depends on the southward interplanetary magnetic field (B_z). Therefore,

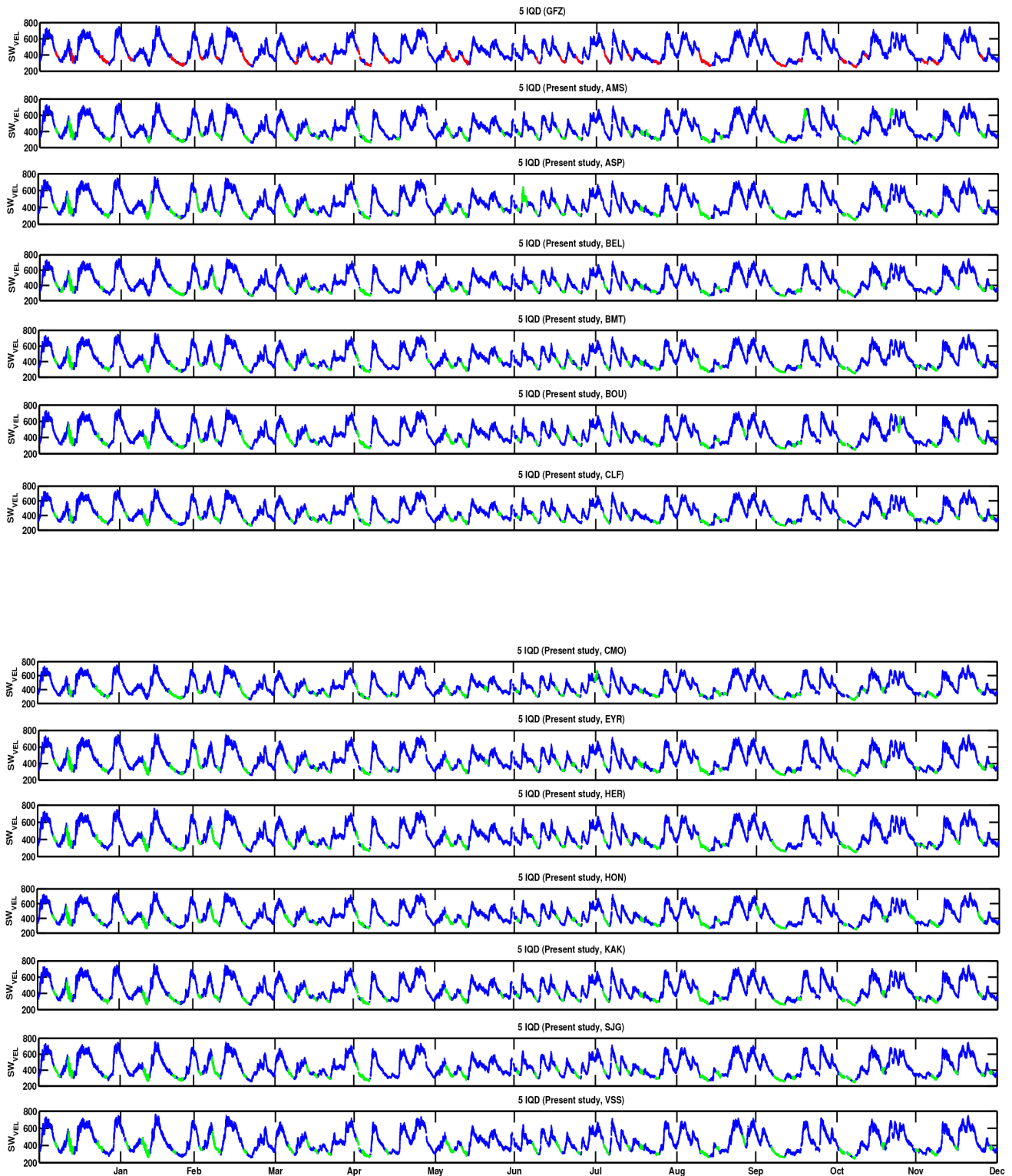


Figure 6. SW velocity for 2007. The 5 quietest days of month are indicated based on (top) the conventional GFZ definition and (bottom) the wavelet method proposed in this study.

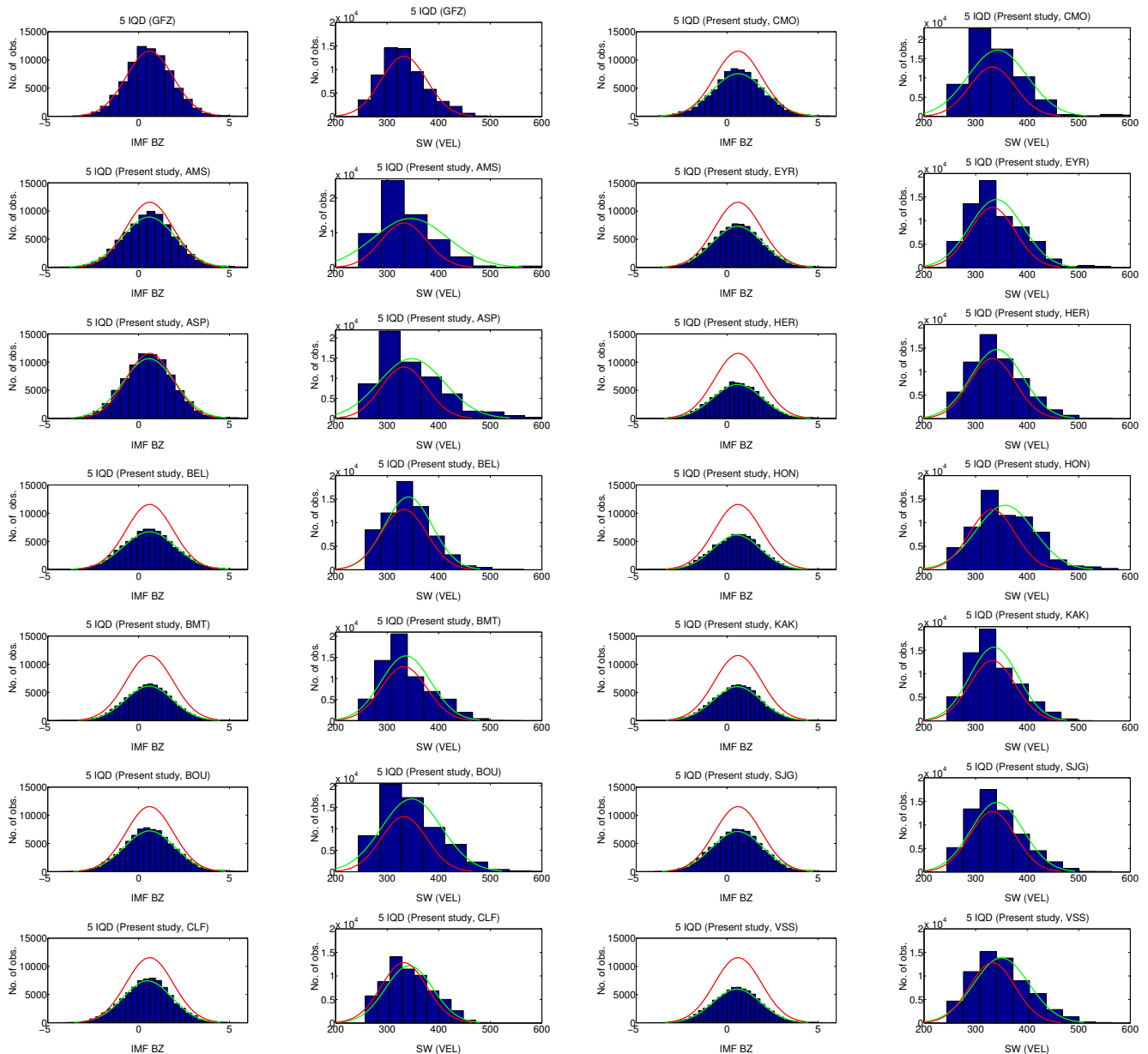


Figure 7. Distribution of IMF B_z and SW velocity for the 5 quietest days determined by the GFZ and by the wavelet analysis for the 13 magnetic observatory used in this study. The histogram Gaussian distribution fit for GFZ is shown in red and, for the wavelet analysis, in green.

low-speed SW does not necessarily mean low geomagnetic activity. The coupling solar-wind–magnetosphere is most strongly controlled by the direction of the interplanetary magnetic field, being strongest when the interplanetary magnetic field is southward (Russell, 2001). At this point, the relative contribution of the wavelet method to the identified quiet SW conditions will remain an unresolved issue.

In order to validate the 5 quietest days derived from the wavelet analysis in a more physically meaningful way, a comparison between the Z component of the interplanetary

magnetic field (B_z) and the SW velocity is presented in a statistical approach. Figure 7 shows the distribution of B_z and SW velocity for the K_p -based 5 quietest days in 2007 determined by the GFZ (histogram Gaussian distribution fit is shown in red) and by the wavelet-based method (in green). All the magnetic observatories show the same trend observed in histogram Gaussian distribution fits for B_z and SW using the K_p -based and the wavelet-based method. The B_z histogram horizontal scale between -1 and 2 nT contains the intervals with the highest frequency of observations, and

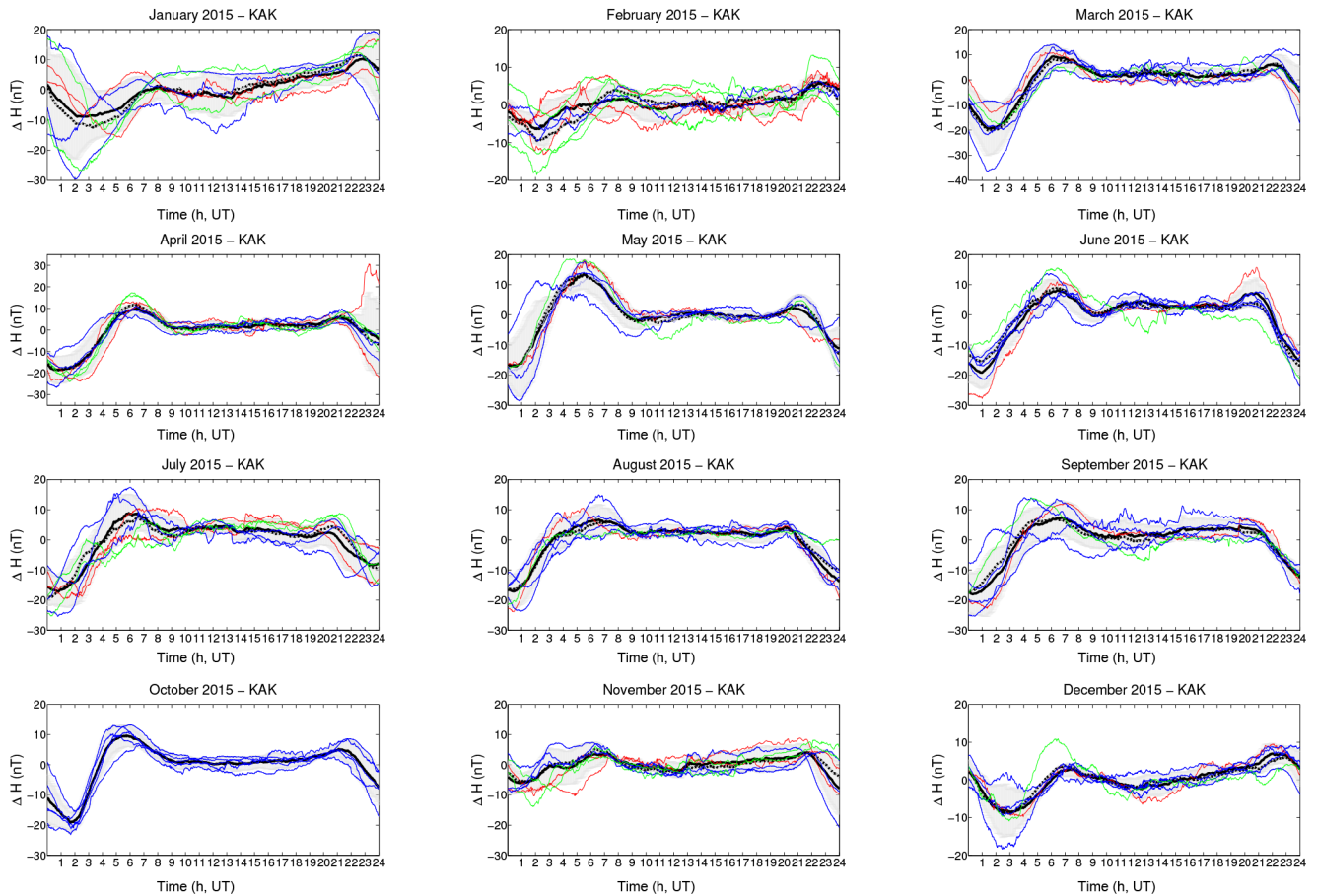


Figure 8. Geomagnetic Sq variations at Kakioka averaged over the 5 quietest days of each month given by the GFZ definition (black lines) and (bottom) the present study (dot-dashed black lines). The 5 quietest days by the GFZ are presented in red, those by the wavelet analysis in green, and the days considered quiet by both methods in blue.

SW histogram shows the intervals between 300 and 400 km s^{-1} . This behavior of B_z and SW is expected during quiet days. Geomagnetically quiet days are associated with near-zero or small and positive values of B_z and low SW velocities (Campbell, 1989). The wavelet-based quiet days present these characteristics; therefore, these days are geomagnetically quiet in nature (see Fig. 7).

However, it is noticeable that the low-latitude magnetic observatories present differences between their histogram Gaussian distribution fits. This result may be explained by the fact that the Kp index is obtained as the mean value of the disturbance levels observed at 13 subauroral magnetic observatories. As discussed by Klausner et al. (2016a), the observatories located at high latitudes presented more structured wavelet signatures, which are associated with rapid changes in magnetospheric and ionospheric currents in the auroral region, while at low latitudes, the wavelet signatures are smoother.

The wavelet-based method developed here could also be used as an alternative way to calculate the Sq variation using quietest local wavelet candidate days. One of the many

important aspects of determining the Sq variation is to calculate the Dst index. The derivation of the Dst index consists of three main steps: the removal of the secular variation, the elimination of the Sq variation and the calculation of the hourly equatorial Dst index. The traditional method of calculating the Sq baseline for the quiet-day variations is to use the 5 quietest days determined by the GFZ for each month for each magnetic observatory. However, the Dst reconstruction and the quiet-time baseline removal have been a motivation of several works (Karinen and Mursula, 2005, 2006; Mursula et al., 2008; Love and Gannon, 2009).

Figure 8 shows that the difference between the Sq baseline derived from the Kp 5 quietest days and the wavelet analysis 5 quietest days is rather small. However, the selected 5 quietest days are not the same for the two cases but the average Sq variations are almost identical. These results show that the difference due to the selection of the 5 quietest days is much smaller than the day-to-day variability of Sq. Therefore, the method developed here could be used as an alternative way to calculate the Sq baseline because it would not make any significant difference to the Dst index.

5 Conclusions

In this work, we implemented the wavelet-based method as an alternative way to identify local geomagnetically quiet days. This new approach addresses some issues, such as the availability and the quality of data, abrupt changes in the level of the H component, erroneous points in the database and the presence of gaps in almost all the magnetic observatories.

In addition, the EWC has been used to evaluate the geomagnetically local 5 quietest days for each ground observatory chosen. The traditional method of calculating quiet days is using the Kp index determined by the GFZ. Our results showed that the Kp-based and the wavelet-based method present similar results. In spite of the fact that the wavelet method is more sensitive to high-frequency magnetic variations, our results show that the EWC could be used as an alternative tool to the Kp-based method.

In response to the variation of SW velocity, the wavelet-based geomagnetically local 5 quietest days appear mostly during the passage of low-speed SW. This quietest magnetic activity tends to occur just before the arrival of high-speed SW as other researchers have found (Tsurutani et al., 1995; Borovsky and Steinberg, 2006). The EWC analysis has shown great potential to detect the interval 2 calm days prior to the high-speed-stream-driven storm events.

Another important aspect of the EWC analysis is that the days determined by the wavelet-based method could be also used in other applications including the calculation of the Sq baseline. As observed for KAK, even though the 5 quietest days are not the same for the two cases, the average Sq-wavelet-based and Kp-based baselines are almost identical.

To conclude, our methodology could be used in a semi-automatic way to characterize the quiet and disturbed magnetic periods using a scale-time-dependent decomposition provided by the amplitude of the EWCs and filtering techniques. An alternative method for the detection and classification of geomagnetic signal variations may also be useful to understand the local physical processes involved in these events, and, in the near future, it could be implemented in real-time analysis. Moreover, this exploratory study encourages the use of alternative algorithms for Sq isolation during solar minimum activity.

Data availability

All the ground magnetic data presented in this paper can be freely downloaded using a standard internet browser from the INTERMAGNET site (www.intermagnet.org); all the interplanetary parameters can be obtained from the OMNIWeb (<http://omniweb.gsfc.nasa.gov/form/dx1.html>), and the magnetic indexes are available from WDC Kyoto (<http://wdc.kugi.kyoto-u.ac.jp>).

Acknowledgements. V. Klausner wishes to thank CAPES for the financial support for her PhD (CAPES – grants 465/2008) and her postdoctoral research within the Programa Nacional de Pós-Doutorado (PNPD – CAPES) and FAPESP (grants 2011/20588-7 and 2013/06029-0). C. M. N. Cândido would like to thank CAPES, Process No. PNP20132017-33010013008 (PNPD fellowship), for the financial support for her research. Furthermore, the authors would like to thank the GFZ, OMNIWeb, WDC Kyoto and INTERMAGNET program for the data sets used in this work.

The topical editor, K. Hosokawa, thanks M. Herraiz and one anonymous referee for help in evaluating this paper.

References

- Belcher, J. W. and Davis Jr, L.: Large-amplitude Alfvén waves in the interplanetary medium, 2, *J. Geophys. Res.*, 76, 3534–3563, 1971.
- Borovsky, J. E. and Steinberg, J. T.: The “calm before the storm” in CIR/magnetosphere interactions: Occurrence statistic, solar wind statistic, and magnetospheric preconditioning, *J. Geophys. Res.*, 111, A07S10, doi:10.1029/2005JA011397, 2006.
- Campbell, W. H.: An introduction to quiet daily geomagnetic fields. *Pure Appl. Geophys.*, 131, 315–331, 1989.
- Chapman, S. and Bartels, J.: *Geomagnetic and Related Phenomena*, 1, Oxford Clarendon Press, Oxford, 1940.
- Gonzalez, W. D., Joselyn, J. A., Kamide, Y., Kroehl, H. W., Rosotoker, G., Tsurutani, B. T., and Vasyliunas, V. M.: What is a geomagnetic storm? *J. Geophys. Res.*, 99, 5771–5792, 1994.
- Gonzalez, W. D., Guarnieri, F. L., Clúa de Gonzalez, A. L., Echer, E., Alves, M. V., Ogino, T., and Tsurutani, B. T.: Magnetospheric Energetics During HILDCAAs, *American Geophysical Union*, 167, 175–182, 2006.
- Guarnieri, F. L.: The Nature of Auroras During High-Intensity Long-Duration Continuous AE Activity (HILDCAA) Events: 1998 to 2001, *American Geophysical Union*, 167, 235–243, 2006.
- Hafez, A. G., Ghamrya, E., Yayamab, H., and Yumotoe, K.: Undecimated discrete wavelet transform based algorithm for extraction of geomagnetic storm sudden commencement onset of high resolution records, *Comput. Geosci.*, 51, 143–152, 2013.
- INTERMAGNET: International Real-time Magnetic Observatory Network, available at: www.intermagnet.org, 2007.
- Jach, A., Kokoszka, P., Sojka, L., and Zhu, L.: Wavelet-based index of magnetic storm activity, *J. Geophys. Res.*, 111, A09215, doi:10.1029/2006JA011635, 2006.
- Karinen, A. and Mursula, K.: A new reconstruction of the D_{st} index for 1932–2002, *Ann. Geophys.*, 23, 475–485, doi:10.5194/angeo-23-475-2005, 2005.
- Karinen, A. and Mursula, K.: Correcting the Dst index: Consequences for absolute level and correlations, *J. Geophys. Res.*, 111, A08207, doi:10.1029/2005JA011299, 2006.
- Klausner, V., Papa, A. R. R., Mendes, O., Domingues, M. O., and Frick, P.: Characteristics of solar diurnal variations: a case study based on records from the ground magnetic observatory at Vasouras, Brazil, *J. Atmos. Sol.-Terr. Phys.*, 92, 124–136, 2013.
- Klausner, V., Ojeda González, A., Domingues, M. O., Mendes, O., and Papa, A. R. R.: Study of local regularities in solar wind data

- and ground magnetograms, *J. Atmos. Sol.-Terr. Phys.*, 112, 10–19, 2014a.
- Klausner, V., Mendes, O., Domingues, M. O., Papa, A. R. R., Tyler, R. H., Frick, P., and Kherani, E. A.: Advantage of wavelet technique to highlight the observed geomagnetic perturbations linked to the Chilean tsunami (2010), *J. Geophys. Res.-Space*, 119, 3077–3093, 2014b.
- Klausner, V., Domingues, M. O., Mendes, O., Mendes da Costa, A., and Ojeda González, A.: Latitudinal and longitudinal behavior of the geomagnetic field during a disturbed period: A case study using wavelet techniques, *Adv. Space Res.*, doi:10.1016/j.asr.2016.01.018, in press, 2016a.
- Klausner, V., Almeida, T., de Meneses, F. C., Kherani, E. A., Pillat, V. G., and Muella, M. T. A. H.: Chile2015: Induced magnetic fields on the Z-component by tsunami wave propagation, *Pure Appl. Geophys.*, doi:10.1007/s00024-016-1279-y, in press, 2016b.
- Kozyra, J. U., Crowley, G., Emery, B. A., Fang, X., Maris, G., Mlynczak, M. G., Niciejewski, R. J., Palo, S. E., Paxton, L. J., Randall, C. E., Rong, P.-P., Russell III, J. M., Skinner, W., Solomon, S. C., Talaat, E. R., Wu, Q., and Yee, J. H.: Response of the Upper/Middle Atmosphere to Coronal Holes and Powerful High-Speed Solar Wind Streams in 2003, *American Geophysical Union*, 167, 319–340, 2006.
- Love, J. J. and Gannon, J. L.: Revised D_{st} and the epicycles of magnetic disturbance: 1958–2007, *Ann. Geophys.*, 27, 3101–3131, doi:10.5194/angeo-27-3101-2009, 2009.
- Love, J. J. and Rigler, E. J.: The magnetic tides of Honolulu, *Geophysical International Journal*, 197, 1335–1353, 2014.
- Mendes, O. J., Domingues, M. O., Mendes da Costa, A., and Clúa de Gonzalez, A. L.: Wavelet analysis applied to magnetograms: Singularity detections related to geomagnetic storms, *J. Atmos. Sol.-Terr. Phys.*, 67, 1827–1836, 2005.
- Mendes da Costa, A., Domingues, M. O., Mendes, O., and Brum, C. G. M.: Interplanetary medium condition effects in the south atlantic magnetic anomaly: A case study, *J. Atmos. Sol.-Terr. Phys.*, 73, 1478–1491, 2011.
- Mursula, K., Holappa, L., and Karinen, A.: Correct normalization of the Dst index, *Astrophysics and Space Sciences Transactions*, 4, 41–45, 2008.
- Nosé, M., Iyemori, T., Wang, L., Hitchman, A., Matzka, J., Feller, M., Egdorf, S., Gilder, S., Kumasaka, N., Koga, K., Matsumoto, H., Koshiishi, H., Cifuentes-Nava, G., Curto, J. J., Segarra, A., and Celik, C.: Wp index: A new substorm index derived from high-resolution geomagnetic field data at low latitude, *Space Weather*, 10, S08002, doi:10.1029/2012SW000785, 2012.
- OMNIWeb: Interface to produce plots, listings or output files from OMNI 2, available at: <http://omniweb.gsfc.nasa.gov/form/dx1.html>, 2007.
- Richardson, I. G., Cliver, E. W., and Cane, H. V.: Sources of geomagnetic activity over the solar cycle: Relative importance of coronal mass ejections, high-speed streams, and slow solar wind, *J. Geophys. Res.-Space*, 105, 18203–18213, 2000.
- Richardson, I. G.: The Formation of CIRs at Stream-Stream Interfaces and Resultant Geomagnetic Activity, *Geoph. Monog. Series*, 167, 45–58, 2006.
- Russell, C. T.: Solar Wind and Interplanetary Magnetic Field: A Tutorial, in: *Space Weather*, edited by: Song, P., Singer, H. J., and Siscoe, G. L., American Geophysical Union, Washington, DC, doi:10.1029/GM125p0073, 2001.
- Smith, E. J. and Wolfe, J. H.: Observations of interaction regions and corotating shocks between one and five AU: Pioneers 10 and 11, *Geophys. Res. Lett.*, 3, 137–140, 1976.
- Sugiura, M.: Hourly values of equatorial Dst for the IGY, *Annals of the International Geophysical Year* 35, 9, 9–45, Pergamon Press, Oxford, 1964.
- Tsurutani, B. T. and Gonzalez, W. D.: The cause of high-intensity long-duration continuous AE activity (HILDCAAs): Interplanetary Alfvén wave trains, *Planet. Space Sci.*, 35, 405–412, 1987.
- Tsurutani, B. T., Gonzalez, W. D., Clúa de Gonzalez, A. L., Tang, F., Arballo, J. K., and Okada, M.: Interplanetary origin of geomagnetic activity in the declining phase of the solar cycle, *J. Geophys. Res.*, 100, 21717–21733, 1995.
- Tsurutani, B. T., Gonzalez, W. D., Clúa de Gonzalez, A. L., Guarnieri, F. L., Gopalswamy, N., Grande, M., Kamide, Y., Kasahara, Y., Lu, G., Mann, I., McPherron, R., Soraas, F., and Vasylunas, V.: Corotating solar wind streams and recurrent geomagnetic activity: A review, *J. Geophys. Res.*, 111, A07S01, doi:10.1029/2005JA011273, 2006.
- Turner, N. E., Mitchell, E. J., Knipp, D. J., and Emery, B. A.: Energetics of Magnetic Storms Driven by Corotating Interaction Regions: A Study of Geoeffectiveness, in *Recurrent Magnetic Storms: Corotating Solar Wind Streams*, American Geophysical Union, 167, 113–124, 2006.
- WDC Kyoto: World Data Center for Geomagnetism, Kyoto, available at: <http://wdc.kugi.kyoto-u.ac.jp>, 2007.
- Xistouris, G., Sigala, E., and Mavromichalaki, H.: A complete Catalogue of High Speed Solar Wind Streams during Solar Cycle 23, *Solar Physics*, 289, 995–1012, 2014.
- Xu, Z., Zhu, L., Sojka, J., Kokoszka, P., and Jach, A.: An assessment study of the wavelet-based index of magnetic storm activity (WISA) and its comparison to the Dst index, *J. Atmos. Sol.-Terr. Phys.*, 70, 1579–1588, 2008.